

***In vitro* and *in vivo* insulinotropic properties of the multifunctional frog skin peptide
hymenochirin-1B: a structure-activity study**

Bosede O. Owolabi¹, Opeolu O. Ojo^{1,2}, Dinesh K. Srinivasan¹, J. Michael Conlon¹, Peter R.
Flatt¹ and Yasser H. A. Abdel-Wahab^{1,*}

1= SAAD Centre for Pharmacy & Diabetes, School of Biomedical Sciences, University of
Ulster, Coleraine, BT52 1SA, UK

2= School of Health, Sport and Bioscience, University of East London, Stratford, E15 4LZ, UK.

***Correspondence author:** Dr. Yasser H. A. Abdel-Wahab, School of Biomedical Sciences,

University of Ulster, Coleraine, BT52 1SA, Northern Ireland, UK. E-mail: y.abdel-

wahab@ulster.ac.uk, Tel: +442870324354

Abstract

Hymenochirin-1b (Hym-1B; IKLSPETKDNLKKV LKGAIKGAI AVAKMV.NH₂) is a cationic, α -helical amphibian host-defense peptide with antimicrobial, anticancer, and immunomodulatory properties. This study investigates the abilities of the peptide and nine analogs containing substitutions of Pro⁵, Glu⁶, and Asp⁹ by either L-lysine or D-lysine to stimulate insulin release *in vitro* using BRIN-BD11 clonal β -cells or isolated mouse islets and *in vivo* using mice fed a high fat diet to produce obesity and insulin resistance. Hym-1B produced a significant and concentration-dependent increase in the rate of insulin release from BRIN-BD11 cells without cytotoxicity at concentrations up to 1 μ M with a threshold concentration of 1nM. The threshold concentrations for the analogues were: [P5K], [E6K], [D9K], [P5K,E6K] and [E6K,D9k] 0.003nM, [E6K,D9K] and [D9k] 0.01nM, [P5K,D9K] 0.1 nM and [E6k] 0.3 nM. All peptides displayed cytotoxicity at concentrations \geq 1 μ M except the [P5K] and [D9k] analogues which were non-toxic at 3 μ M. The potency and maximum rate of insulin release from mouse islets produced by the [P5K] peptide were significantly greater than produced by Hym-1B. Neither Hym-1B nor the [P5K] analogue at 1 μ M concentration had an effect on membrane depolarization or intracellular Ca²⁺. The [P5K] analogue (1 μ M) produced a significant increase in cAMP concentration in BRIN-BD11 cells and stimulated GLP-1 secretion from GLUTag cells. Down-regulation of the protein kinase A pathway by overnight incubation with forskolin completely abolished the insulin-releasing effects of [P5K]hym-1B. Intraperitoneal administration of the [P5K] and [D9k] analogues (75nmol/kg body weight) to high fat-fed mice with insulin resistance significantly enhanced glucose tolerance with a concomitant increase in insulin secretion. We conclude that [P5K]hym-1B and [D9k]hym-1B show potential for development into anti-diabetic agents.

Keyword:

Hymenochirin-1b,
Type 2 diabetes,
Amphibian skin peptide,
Insulin-release

Abbreviations:

LDH = Lactate dehydrogenase
Hym-1B = Hymenochirin-1b
[Ca²⁺]_i = Intracellular calcium concentration
IBMX = 3-isobutyl-1-methylxanthine
PKC = Protein kinase C
PKA = Protein Kinase A
GLP-1 = Glucagon-like peptide 1
TNF- α = Tumor necrosis factor α
IL-17 = Interleukin 17
CPF-6 = Caerulein precursor fragment 6
PMA = Para-Methoxyamphetamine
MALDI-TOF = Matrix-assisted laser desorption/ionization time of flight
EGTA = ethylene glycol tetraacetic acid
CCK8 = Cholecystokinin 8
HEPES = 4-(2-hydroxyethyl)-1-piperazineethanesulfonic acid

Introduction

The global epidemic of Type 2 diabetes has intensified the search for new therapeutic options to achieve and sustain glycaemic control and prevent diabetic complications (Peters 2010). Natural occurring bioactive compounds offer boundless opportunities for new anti-diabetic drug discovery and there is an increasing focus on the exploration of these sources (Mandal et al. 2014). Exendin-4 isolated from the venom of the Gila monster lizard was the first of such products to reach the market for the treatment of Type 2 diabetes (Tokuda et al. 2014). Host-defense peptides from the skins of several frog species have also demonstrated potential for development into novel anti-diabetic agents. Several such peptides that were first identified on the basis of their antimicrobial activities have subsequently been found to possess insulinotropic effects. These peptides are generally multifunctional displaying antimicrobial, anticancer, and antiviral activities [reviewed in (Conlon et al. 2014)].

Clawed frogs of the family Pipidae are distributed into five genera (*Hymenochirus*, *Pseudhymenochirus*, *Silurana*, *Xenopus* and *Pipa*). All are indigenous to Africa except members of the genus *Pipa* which are found in South America. The genus *Hymenochirus* contains four species: *H. boettgeri*, *H. boulengeri*, *H. curtipes* and *H. feae* (Frost 2015). Peptidomic analysis of the skin secretions of the Congo dwarf clawed frog *H. boettgeri* revealed the presence of five structural related peptides termed hymenochirins that have low structural similarity with the antimicrobial peptides isolated from skin secretions of other frogs (Mechkarska et al. 2012). Hymenochirin-1B (IKLSPETKDNLKKVLKGAIKGAI(A)AVAKMV.NH₂) displays multifunctional properties including antimicrobial (Mechkarska et al. 2012; 2013), immunomodulatory (Mechkarska et al. 2013), and anticancer activities (Attoub et al. 2013) but its insulinotropic effects have not yet been reported.

The disadvantages of naturally occurring peptides as therapeutic agents include short-half life in the circulation, toxicity, low potency and bioavailability, and significant immunogenicity (Lewis and Garcia 2003). However, these limitations may be circumvented to varying degrees by the design of appropriate analogues (Avan et al. 2014). The hymenochirins adopt an amphipathic α -helical conformation in a membrane-mimetic solvent (50% trifluoroethanol-water) (Serra et al. 2014). Studies with analogues of other α -helical, frog skin host-defense peptides have shown that increasing cationicity, while maintaining amphipathicity enhances both antimicrobial (Conlon et al. 2007) and anticancer (Attoub et al. 2013) and produces more potent and effective insulin-releasing peptides (Abdel-Wahab et al. 2008b; 2010; Srinivasan et al. 2014). The aim of the present study was to investigate the insulinotropic actions of hymenochirin-1B, both *in vitro* using BRIN-BD11 clonal β -cells or isolated mouse islets and *in vivo* using mice fed a high fat diet to produce obesity and insulin resistance. The effects of increasing cationicity by substitutions of neutral (Pro⁵) and acidic (Glu⁶ and Asp⁹) amino acids on the hydrophilic face of the α -helix by L-lysine or D-lysine on insulin-releasing and cytotoxic activities of the peptide were also determined.

Results

Effects of hymenochirin-1B and its analogues on insulin-release from BRIN-BD 11 cells

The basal rate of insulin release from BRIN-BD11 cells in the presence of 5.6 mM glucose alone was 1.05 ± 0.06 ng/ 10^6 cells/20 min. In the presence of the well-established insulin secretagogue, 10 mM alanine, the rate of insulin release increased to 6.49 ± 0.24 ng/ 10^6 cells/20 min. Incubation with hymenochirin-1B produced a significant ($P < 0.05$ to $P < 0.001$) stimulatory response at concentrations ≥ 1 nM (Fig. 1) with a 304% increase above the basal rate at 1 μ M (Table 1). At a concentration of 3 μ M, the peptide significantly stimulated the release of LDH

from the cells indicating that the integrity of the plasma membrane had been compromised. All analogues tested showed greater insulin-releasing potency than the native peptide. The threshold concentration (minimum concentration producing a significant increase in secretion rate) for the [P5K], [E6K], [D9K], [P5K, E6K] and [E6K, D9K] analogues was 0.003nM, for the [E6K,D9K] and [D9k] analogues 0.01nM, for [P5K,D9K]hym-1B 0.1M, and for [E6k]hym-1B 0.3 nM (Table 1).

The di-substituted [P5K,E6K], [P5K,D9K], and [E6K,D9K] analogues showed greater cytotoxicity compared to hym-1B producing a significant increase in the rate of LDH release at concentrations below 1 μ M (Table 1). However, the [P5K] and [D9k] analogues were non-toxic at a concentration of 3 μ M. Both peptides produced a significantly greater increase in the rate of insulin release at 3 μ M compared with hym-1B at its maximum non-toxic concentration of 1 μ M (Table 1).

Effects of hym-1B and analogues on insulin release from isolated islets

In the presence of 16.7 mM glucose, Hym-1B and its [P5K] and [D9k] analogues produced a concentration-dependent increase in the rate of insulin secretion from isolated mouse islets (Fig. 2A). Significant stimulatory effects of hym-1B and [D9k]hym-1B were seen at concentrations \geq 10nM while [P5K]hym-1B showed a significant stimulatory effect at 0.1nM (Table 2). The stimulatory effects of the [P5K] and [D9k] analogues, measured as the % of total insulin content released, were significantly ($P < 0.001$) greater than GLP-1 when tested at 1 μ M concentration (Table 2). These effects were not accompanied by significant release of LDH from isolated islets (Fig. 2B, Table 2).

Insulin-releasing activities of hym-1B and [P5K]hym-1B in the presence of known modulators of insulin release

The mechanism of action of hym-1B and [P5K]hym-1B was investigated by performing incubations in presence of known modulators of insulin release. As shown in Table 3, the stimulatory actions of the peptides were maintained at 16.7 mM ambient glucose concentration and in the presence of K⁺ channel activator, diazoxide (300µM) and the blocker of L-type voltage-dependent Ca²⁺ channels, verapamil (50 µM). A KCl (30 mM) depolarising stimulus increased the rate of insulin release and this increase was significantly (P < 0.001) augmented by hym-1B (1.4-fold) and [P5K]hym-1B (1.9-fold). The stimulatory activities of the peptides were not significantly affected when incubations were performed in the absence of extracellular calcium (Table 4).

Effects of peptides on membrane depolarization and intracellular calcium ([Ca²⁺]_i)

In the presence of 30mM KCl, a significant (96 %, P<0.001) increase in membrane depolarisation was observed in BRIN-BD11 cells. In contrast to the effects of KCl, hym-1B and [P5K]hym-1B had no effect on membrane depolarisation (Fig. 3). Similarly, alanine caused a significant (87%, P<0.001) increase in intracellular calcium concentration but no significant effect was observed with the peptides (Fig. 4).

Effects of [P5K]hym-1B on intracellular concentrations of cyclic AMP

In order to determine which cell signalling pathway may be involved in the insulin-releasing effects of [P5K]hym-1B, its effects on cAMP production in BRIN-BD11 cells were investigated. As shown in Fig. 5A, [P5K]hym-1B produced a significant ($P < 0.01$) increase in cAMP concentration compared to 5.6mM glucose + 200 μ M IBMX. The stimulatory effects produced by [P5K]hym-1B (1 μ M) was comparable to the effects produced by GLP-1 (10nM). Concomitantly, [P5K]hym-1B produced a significant ($P < 0.01$) increase in the rate of insulin release compared to 5.6mM glucose alone and 5.6mM glucose + IBMX (200 μ M) under the same experimental condition (Fig. 5B).

Effects of down-regulation of the PKC and PKA pathways on [P5K]hym-1B stimulated insulin release

The experimental protocol made use of the fact that overnight culture of BRIN-BD11 cells with activators of the PKA pathway (forskolin) or the PKC pathway (PMA) blocks the subsequent stimulatory effects of agents that activate these pathways (McClenaghan et al., 2006). Following overnight culture in media alone, [P5K]hym-1B and all control compounds exhibited insulin stimulatory effects which were significantly ($P < 0.001$) higher than 5.6mM glucose alone (Fig. 6). Down-regulation of the PKA pathway with 25 μ M forskolin completely inhibited the insulin stimulatory activities of [P5K]hym-1B, GLP-1 and forskolin but not CCK8. In a second set of

experiment that involved down-regulation of the PKC pathway with PMA (10nM), [P5K]hym-1B, forskolin and GLP-1 retained their full stimulatory abilities but the effect of CCK8 was abolished. Down-regulation of both the PKA and PKC pathways by forskolin + PMA resulted in the loss of stimulatory response by all agents tested (Fig. 6).

Effects of [P5K]hym-1B on GLP- 1 and LDH release from GLUTag cells

As shown in Fig.7, [P5K]hym-1B produced a significant ($P<0.001$) increase in the rate of GLP-1 release from GLUTag cells. At $1\mu\text{M}$, the peptide elicited a 66% increase in GLP-1 secretion cells over the basal rate in 2mM glucose while the positive control (10 mM glutamine) produced a 76% increase. The observed stimulatory effect on GLP-1 release was without cell toxicity at any concentration tested as evidenced by a lack of increase in the rate of LDH release (data not shown).

Acute effects of [P5K]hym-1B and [D9k]hym-1B on glucose tolerance in high-fat fed mice

No adverse effects were observed in the animals following administration of the peptides. Plasma glucose concentrations in obese, insulin-resistant mice receiving intraperitoneal administration of [P5K]hym-1B (75nmol/kg body weight) were significantly less at 60 min after intraperitoneal injection of glucose compared to animals receiving vehicle only (Fig. 8A). The integrated response of plasma glucose (area under the curve) was significantly less after administration of vehicle only (Fig. 8B). Plasma insulin concentrations were significantly higher at 15 min after intraperitoneal injection of glucose in animals receiving [P5K]hym-1B (Fig. 8C) and the integrated response (total amount of insulin released over 60 min) was significantly greater

(2.2-fold; $P < 0.001$) (Fig. 8D). Similarly, plasma glucose concentration in animals receiving [D9k]hym-1B were significantly less at 60 min (Fig. 8E) and the integrated response of plasma glucose was also significantly less after administration of vehicle only (Fig. 8F). Plasma insulin concentrations after administration of [D9k]hym-1B were not significantly different at any time point compared with vehicle only (Fig. 8G) but the integrated response was significantly greater (1.7-fold; $P < 0.01$) (Fig. 8H).

Discussion

The present investigation has provided further demonstration that the frog skin host-defense peptide hym-1B shows potential for development into a therapeutically valuable agent. Previous studies have shown that the peptide, and its [E6k,D9k] analogue, display high potency against clinical isolates of multidrug-resistant Gram-positive and Gram-negative bacteria (Mechkarska et al. 2013). A role for the peptides as anti-inflammatory agents in treatment sepsis is suggested by their ability to stimulate the production of the anti-inflammatory cytokines IL-4 and IL-10 by human peripheral blood mononuclear cells without significant effect on production of the pro-inflammatory cytokines TNF- α and IL-17 (Mechkarska et al. 2013). Furthermore, hym-1B and the [D9k] analogue possess high cytotoxic potency against a range of human tumour cells but very low hemolytic activity against human erythrocytes (Attoub et al. 2013). These observations have now been extended to show that hym-1B and its lysine-containing analogues stimulate the rate of insulin release *in vitro* from both BRIN-BD11 rat clonal β -cells or isolated mouse islets and *in vivo* from mice fed a high-fat diet to induce insulin resistance. Consequently,

these peptides show potential for development into agents for the treatment of patients with Type 2 diabetes.

The clinical usefulness of hym-1B as an anti-diabetic agent is limited by the fact that significant cytotoxicity against BRIN-BD11 was measured at concentrations greater than 1 μ M although this concentration is 1000-times greater than the minimum concentration producing a significant increase in the rate of insulin release. The three-dimensional structure of hym-1B has not been determined but a nuclear magnetic resonance investigation of a structurally similar peptide from the same family, hymenochirin-1P has demonstrated that the peptide has a random coil conformation in water but, in the membrane-mimetic solvent 50% (v/v) trifluoroethanol-water adopts a well-defined conformation characterized by two α -helical domains from residues 6 to 17 and from 21 to 28 with the N-terminal region unfolded (Serra et al., 2014). In order to develop analogues of hym-1B with increased insulintropic potency and efficacy, the Pro5, Glu6 and Asp9 amino acid residues in the first α -helical domain were substituted by one or more L-lysine or D-lysine residues. All analogues tested showed great potency than the native peptide indicating that an increase in cationicity promotes insulin-releasing activity. This conclusion is consistent with the increased insulintropic potency observed with [L18K]pseudin-2 (Abdel-Wahab et al 2008b), [D4K]B2RP (Abdel-Wahab et al 2010) and [G11K]alyteserin-2a (Ojo *et al* 2013a). The [P5K,E6K], [P5K,D9K], and [E6K,D9K] analogs were more cytotoxic to BRIN-BD11 cells and the [E6K], [D9K], [D6k], and [E6k,D9k] peptides were equally cytotoxic (Table 1). However, the present study has identified two analogues, [P5K]hym-1B and [D9k]hym-1B that display greater potency and efficacy (response at the maximum non-toxic concentration) than hym-1B and are not cytotoxic at concentrations up to and including 3 μ M.

Insulin secretion is regulated by two major signaling pathways: the K_{ATP} channel-dependent and K_{ATP} channel-independent augmentation pathway (Henquin 2000). In the former pathway, insulin secretion is triggered by an increased $[ATP]/[ADP]$ ratio, closure of ATP-sensitive potassium channels and opening of voltage-dependent calcium channels. The influx of extracellular calcium and elevation of cytoplasmic intracellular calcium induce exocytosis of insulin. Previous studies with the frog skin peptides alyteserin-2a (Ojo et al. 2013a), tigerinin-1R (Ojo et al. 2013b), and CPF-6 (Srinivasan et al. 2013) using BRIN-BD11 cells and with a brevinin-1 family peptide using RINm5F rat insulinoma-derived cells (Kim et al. 2010) have shown that the peptides produce cellular depolarization and increase intracellular calcium concentration consistent with their insulin-releasing activity being mediated by the K_{ATP} channel-dependent pathway. In contrast, the insulin-releasing activities of brevinin-2GUb (Conlon et al. 2008), phylloseptin-L2 (Abdel-Wahab et al. 2008a), pseudin-2 (Abdel-Wahab et al. 2008b), and several temporin peptides (Abdel-Wahab et al. 2007) do not appear to involve an increase in intracellular Ca^{2+} concentrations. The maintenance of the insulin-releasing activity of [P5K]hym-1B in Ca^{2+} -free media and in the presence of potassium channel activator, diazoxide and the blocker of L-type voltage-dependent calcium channels, verapamil suggests that the effects of the peptide are not mediated primarily by the K_{ATP} channel-dependent pathway. The augmentation by [P5K]hym-1B of the rate of insulin release produced by a depolarizing stimulus (30 mM KCl) may indicate that the peptide may be acting by an, as yet uncharacterized, K_{ATP} channel-independent pathway.

Earlier studies by Green et al. (2004a; 2004b; 2004c) demonstrated that incubation of BRIN-BD11 cells with GLP-1 stimulated cAMP production and it has been speculated that signaling via the PKA pathway may contribute to the modulation of K_{ATP} independent pathway of insulin secretion by GLP-1 (McClenaghan et al. 2006). [P5K]hym-1B also increases intracellular

cAMP concentration with concomitant insulin release from BRIN-BD11 cells (Fig. 5) and, in line with this observation, down-regulation of PKA pathway by forskolin abolishes the insulinotropic activity of the peptide (Fig. 6) In contrast, down-regulation of the PKC pathway by PMA had no significant effect on insulin release. It is concluded, therefore, that insulinotropic activities of [P5K]hym-1B may involve the activation of PKA pathway

The use of long-acting analogues of GLP-1 in the treatment of Type 2 diabetes is well established (Green et al. 2005). In addition to its potent insulinotropic properties, GLP-1 improves of glucose uptake in peripheral tissues, augments of insulin gene transcription and reverses the islet cell deterioration seen in type 2 diabetes (Green et al. 2004c; 2005; Meier et al. 2003; Pospisilik et al. 2003). Moreover, insulin release in response to GLP-1 is glucose dependent, a characteristic which places it at an advantage over other agents that may produce rebound hypoglycemia (Green et al. 2004c; 2005; Natrass et al. 1999). Previous studies have demonstrated the ability of several amphibian host-defense peptides such as maginin-AM2, PGLa and tigerinin-1R to stimulate GLP-1 release from GLUTag cells (Ojo et al. 2013b). GLUTag cells are a useful model with which to identify candidates that stimulate GLP-1 release (Gribble et al. 2003). The ability of glutamine to stimulate GLP-1 secretion from GLUTag cells is well documented (Reimann et al. 2004; Tolhurst et al. 2011) so that it has been used it as positive control in this study. At 1 μ M concentration [P5K]hym-1B produces a significant increase in the rate of GLP-1 release from GLUTag cells that is comparable to that produced by 10 mM glutamine. Consequently, in addition to its direct insulinotropic action on the β -cells of the pancreas, [P5K]hym-1B may also promote the secretion of the incretin hormone GLP-1 from the L-cells of the intestine.

The high-fat fed mouse is a useful model for understanding the effect of an energy dense high fat western diet on the onset of obesity and insulin resistance (Wang and Liao 2012) and the development of metabolic syndrome and Type 2 diabetes (Islam 2009; Zhang *et al* 2009). Previous studies have shown that several host-defense peptides including brevinin-2-related peptide (Abdel-Wahab *et al.* 2010), alyteserin-2a (Ojo *et al.* 2013a), magainin-AM2 (Ojo *et al.* 2015a) and tigerinin-1R (Ojo *et al.* 2015b) improve glucose tolerance in these mice. The present study has demonstrated that the potent but non-toxic analogues [P5K] and [D9k] analogues of hym-1B peptides also lowered blood glucose and enhanced insulin secretion in high-fat fed mice. Consistent with data from *in vitro* studies, [P5K]hym-1B displayed a greater effect on glucose tolerance than [D9k]hym-1B. Further studies are underway to study the effects of daily administration of [P5K]hym-1B over a period of 28 days on glucose tolerance and lipid profile in high-fat fed mice. Future studies will also investigate effects of [P5K]hym-1B administration on islet cells morphology in obese mice.

Materials and Methods

Peptide synthesis and purification

Hym-1B (IKLSPETKDNLKKVLKGAIKGAIHAVAKMV.NH₂) and its L-Lysine- and D-Lysine-containing analogues were supplied in crude form by GL Biochem Ltd (Shanghai China) and were purified to near homogeneity (>98% purity) using reversed-phase HPLC as previously described (Mechkarska *et al.* 2013). The identity of all peptides was confirmed by MALDI-TOF mass spectrometry using a Voyager DE PRO instrument (Applied Biosystems, Foster City, USA).

In vitro insulin release studies using BRIN-BD11 cells

BRIN-BD11 rat clonal β -cells were cultured at 37 °C in an atmosphere of 5% CO₂ and 95% air in RPMI-1640 tissue culture medium containing 10% (v/v) fetal calf serum, antibiotics (100 U/mL penicillin, 0.1 mg/mL streptomycin) and 1.1 mM glucose as previously described (Srinivasan *et al* 2014). Cells were seeded into 24-multiwell plates and allowed to attach during overnight incubation at 37 °C. After incubation, the culture medium was removed and replaced with 1 ml Krebs-Ringer bicarbonate (KRB) buffer containing 115 mM NaCl, 4.7 mM KCl, 1.28 mM CaCl₂, 1.2 mM KH₂PO₄, 1.2 mM MgSO₄, 20 mM HEPES, 25 mM NaHCO₃ and 0.1% bovine serum albumin (BSA), supplemented with 1.1 mM glucose (pH 7.4) and incubated for 40 min at 37 °C. After pre-incubation, incubations with purified synthetic peptides (10^{-12} – 3×10^{-6} μ M; n = 6) were carried out for 20 min at 37 °C using KRB buffer supplemented with 5.6 mM glucose. After incubation, aliquots of cell supernatant were removed for insulin radioimmunoassay (Flatt and Bailey 1981).

Additional incubations (n = 6) with hym-1B (1 μ M) and [P5K]hym-1B (1 μ M) were carried out in the presence of known modulators of insulin-release: (i) 16.7 mM glucose, (ii) 5.6 mM glucose + diazoxide (300 μ M), (iii) 5.6 mM glucose + verapamil (50 μ M), and (iv) 16.7 mM glucose + 30 mM KCl. The role of extracellular calcium in stimulated insulin release from BRIN-BD11 cells was investigated by pre-incubating cells for 40 min with calcium-free KRB buffer pH 7.4 containing 1.1mM glucose and 1mM EGTA followed by incubation for 20 min with hym-1B (1 μ M) and [P5K]hym-1B (1 μ M) in calcium-free KRB buffer containing 5.6 mM glucose .

Insulin-release studies using dispersed mouse islets

Pancreatic islets were isolated from adult C57BL/6 mice as previously described (Lacy and Kostinosky 1967; Goto et al. 1985) by digestion with collagenase P obtained from *Clostridium histolyticum* (Sigma-Aldrich, Dorset, UK). After 48 h of culture, islets were pre-incubated with 500 μ L KRB containing 0.1% bovine serum albumin, and 1.4 mM glucose (pH 7.4) for 1 h at 37 °C. After pre-incubation, incubations with hym-1B and [P5K]hym-1B (0.1 nM - 1 μ M; n = 4) were carried out for 1 h at 37 °C using KRB buffer supplemented with 16.7 mM glucose. Control incubations were carried out in the presence of GLP-1 (1 μ M). Aliquots of supernatant were removed for insulin radioimmunoassay. Islets were retrieved for later determination of islet insulin content following acid-ethanol extraction as previously described (Ojo et al. 2015).

Cytotoxicity assay

The effects of peptides on the rate of lactate dehydrogenase (LDH) release from BRIN-BD11 cells were measured using the cell supernatants obtained from the acute insulin-release experiments. LDH concentrations were determined using a CytoTox 96 non-radioactive cytotoxicity assay kit (Promega, Southampton, UK) according to the manufacturer's instructions as previously described (Ojo et al. 2013a).

Effects of peptides on membrane depolarization and intracellular calcium ($[Ca^{2+}]_i$)

Effects of hym-1B (1 μ M) and [P5K]hym-1B (1 μ M) on membrane depolarization and intracellular Ca^{2+} concentrations were determined fluorimetrically with monolayers of BRIN-BD11 cells using membrane potential and intracellular Ca^{2+} assay kits (Molecular Devices, Sunnyvale, CA, USA) according to the manufacturer's recommended protocols as previously described (Abdel-Wahab *et al* 2008). Data were acquired using a FlexStation scanning fluorimeter with integrated fluid transfer workstation (Molecular Devices). The cells were incubated at 37 °C for 10 min with peptides. Control incubations in the presence of 5.6 mM glucose only, 5.6 mM glucose + 30mM KCl, and 5.6 mM glucose + 10 mM alanine were also carried out.

Effects of [P5K]hym-1B on cyclic AMP production

Cells were seeded at a density of 2×10^5 per well in to 24 multi-well plate and allowed to attach overnight at 37 °C. Medium was discarded and cells were pre-incubated with KRB containing 1.1mM glucose (1 ml) for 40 min at 37 °C. Pre-incubation buffer was replaced by KRB buffer supplemented with 5.6mM glucose and 200 μ M of the phosphodiesterase inhibitor, 3-isobutyl-1-methylxanthine (IBMX) (1 ml), and the cells incubated for 20min. The supernatant was removed and stored for measurement of insulin concentration by radioimmunoassay. Thereafter, 200 μ l of lysis buffer (1:5 dilution) was added to each well and cells were lysed by repeated freezing and thawing cycles. Cyclic AMP concentrations in the cell lysate were measured using a R & D Systems Parameter kit (Abingdon, UK) following the manufacturer's recommended protocol.

Effects of down-regulation of the PKA and PKC pathways on insulin release

BRIN-BD11 cells were seeded at a density of 1.5×10^5 cells per well in to 24 multi-well plate and allowed to attach during an 18 hour culture at 37 °C in an atmosphere of 5% CO₂ and 95% air. Cells were cultured with forskolin (25µM; Sigma-Aldrich, UK) in experiments involving down-regulation of the protein kinase A (PKA) pathway, with phorbol 12-myristate 13-acetate (PMA; 10 nM; Sigma-Aldrich, UK) for down-regulation of the protein kinase C (PKC) pathway, or with a combination of 25µM forskolin + 10nM PMA for down-regulation of both pathways. Prior to the acute tests, cells were pre-incubated in 1ml KRB buffer (1 ml) supplemented with 1.1 mM glucose and 0.1% bovine serum albumin (pH 7.4) for 40 min at 37 °C. Thereafter, the cells were incubated for 20 min in KRB buffer supplemented with 5.6mM glucose (1ml) solution containing (i) [P5K]hym-1B (1µM), (ii) GLP-1 (10nM) and (iii) CCK8 (10 nM). Control incubations with forskolin (25µM), PMA (10nM) and forskolin (25µM) + PMA (10 nM) were also carried out.

Effects of [P5K]-hymenochirin-1B on GLP- 1 release from GLUTag cells

GLUTag cells (Drucker et al. 1992) were cultured and maintained at 37°C and atmosphere of 5% CO₂ and 95% air in Dulbecco's Modified Eagle's medium (DMEM) media supplemented with 5.6mM glucose, 2 mM L-glutamine, and 10% foetal bovine serum as previously described (Ojo et al. 2013b). Cells were allowed to attach to 24 multi-well matrigel coated plates at a density of 1.5×10^5 cells per well during a 24 h incubation at 37 °C. Prior to the experiment, cells were pre-incubated in KRB buffer supplemented with 25mM HEPES, 1% BSA and 1 mM glucose (1

ml) for 45min at 37 °C. Test solutions were made in KRB buffer supplemented with 2mM glucose. After pre-incubation, the cells were incubated for 2 h at 37°C in KRB buffer containing 2 mM glucose (1ml) containing [P5K]hym-1B (10^{-12} M - 10^{-6} M) or 10mM glutamine as a positive control. The concentrations of GLP-1 in the supernatants were determined using a GLP-1 ELISA kit (Millipore, MA, USA) according to the manufacturer's instructions.

In vivo insulin release studies

High-fat fed mice with clear manifestations of obesity, glucose intolerance and insulin resistance and age-matched lean mice (control) were used in the study. Adult (8 week old), male, National Institutes of Health Swiss mice (Harlan Ltd, UK), were housed separately in an air-conditioned room (22 ± 2 °C) with a 12-hour light: 12-hour dark cycle. Animals were maintained on a high-fat diet (45% kcal fat, 20% kcal protein, and 35% kcal carbohydrate) (Dietex International Ltd, Witham, UK) or on a standard rodent pellet diet (Trouw Nutrition, Northwich, UK) for 3 months before the experiment. All animal experiments were carried out in accordance with the UK Animals (Scientific Procedures) Act 1986 and EU Directive 2010/63EU for animal experiments and approved by Ulster University Animal Ethics Review Committee. All necessary steps were taken to ameliorate any potential animal suffering.

Overnight fasted high-fat fed mice (n=8) were injected intraperitoneal with glucose alone (18mmol/kg body weight) or together with [P5K]hym-1B (75nmol/kg body weight) or [D9k]hym-1B (75nmol/kg body weight). This peptide dose was chosen as a result of a preliminary study that determined acute effects of various concentrations of the peptides on glucose tolerance. Blood samples were collected as previously described (Srinivasan et al. 2014) before and after peptide

administration at the different time points shown in Fig. 8. Blood glucose concentrations were measured using an Ascencia Contour Blood Glucose Meter (Bayer, Newbury, UK). Plasma insulin concentrations were measured by radioimmunoassay.

Statistical Analysis

Data were compared using unpaired Student's t test (non-parametric, with two-tailed P values and 95% confidence interval) and one way ANOVA with Bonferroni post-hoc test wherever applicable. Area under the curve (AUC) analysis was carried out using the trapezoidal rule with baseline correction. Values are presented as mean \pm SEM. Results are considered significant if $p < 0.05$.

Acknowledgements

This study was supported by the University of Ulster Research Strategy Funding and an award of a University Vice Chancellor Research Studentship to DKS. We thank Professor D. Drucker for access to GLUTag cells.

Conflict of Interest

No conflict of interest declared

References

Abdel-Wahab YH, Marenah L, Flatt PR, Conlon JM (2007) Insulin releasing properties of the temporin family of antimicrobial peptides. *Protein Pept Lett* 14:702-707

- Abdel-Wahab YH, Power GJ, Flatt PR, Woodhams DC, Rollins-Smith LA, Conlon JM (2008a) A peptide of the phyllos/eptin family from the skin of the frog *Hylomantis lemur* (Phyllomedusinae) with potent in vitro and in vivo insulin-releasing activity. *Peptides* 29:2136-2143
- Abdel-Wahab YHA, Power GJ, Ng MT, Flatt PR, Conlon JM (2008b) Insulin-releasing properties of the frog skin peptide pseudin-2 and its [Lys (18)]-substituted analogue. *Biol Chem* 389:143-148
- Abdel-Wahab YHA, Patterson S, Flatt PR, Conlon JM (2010) Brevinin-2-related peptide and its [D4K] analogue stimulate insulin release in vitro and improve glucose tolerance in mice fed a high fat diet. *Horm Metab Res* 42:652-656
- Attoub S, Arafat H, Mechkarska M, Conlon JM (2013) Anti-tumour activities of the host-defense peptide hymenochirin-1B. *Regul Pept* 187:51-56
- Avan C, Hall D, Katritzky AR (2014) Peptidomimetics *via* modifications of amino acids and peptide bonds. *Chem Soc Rev* 43:3575-3594
- Conlon JM, Al-Ghaferi N, Abraham B, Leprince J (2007) Strategies for transformation of naturally-occurring amphibian antimicrobial peptides into therapeutically valuable anti-infective agents. *Methods* 42:349-357
- Conlon JM, Power GJ, Abdel-Wahab YHA, Flatt PR, Jiansheng H, Coquet L, Leprince J, Jouenne T, Vaudry H (2008) A potent, non-toxic insulin-releasing peptide isolated from an extract of the skin of the Asian frog, *Hylarana guntheri* (Anura:Ranidae). *Regul Pept* 151:153-159
- Conlon JM., Mechkarska M, Lukic ML, Flatt PR (2014) Potential therapeutic applications of multifunctional host-defense peptides from frog skin as anti-cancer, anti-viral, immunomodulatory, and anti-diabetic agents. *Peptides* 57:67-77
- Drucker DJ, Lee YC, Asa SL, Brubaker PL (1992) Inhibition of pancreatic glucagon gene expression in mice bearing a subcutaneous glucagon-producing GLUTag transplantable tumor. *Mol Endocrinol* 6:2175-2184.
- Flatt PR, Bailey CJ (1981) Abnormal plasma glucose and insulin responses in heterozygous lean (ob/+) mice. *Diabetologia* 20:573-537
- Flatt,PR, Green BD (2006) Nutrient regulation of pancreatic β -cell function in diabetes: problems and potential solutions. *Biochem Soc Trans* 34:774-778

- Frost DR (2015) Amphibian species of the world: an online reference. Version 6.0. Electronic database accessible at <http://research.amnh.org/herpetology/amphibia/index.php>. American Museum of Natural History, New York, USA
- Green BD, Gault VA, Flatt PR, Harriott P, Greer B, O'Harte FPM (2004a) Comparative effects of GLP-1 and GIP on cAMP production, insulin secretion, and in vivo antidiabetic actions following substitution of Ala⁸/Ala² with 2-aminobutyric acid. *Arch Biochem Biophys* 428:136–143
- Green BD, Mooney MH, Gault VA, Irwin N, Bailey CJ, Harriott P, Greer B, O'Harte FPM, Flatt PR (2004b) N-terminal His⁷-modification of glucagon-like peptide-1(7–36) amide generates dipeptidyl peptidase IV-stable analogues with potent antihyperglycaemic activity. *J Endocrinol* 180:379–388
- Green BD, Mooney MH, Gault VA, Irwin N, Bailey CJ, Harriott P, Greer B, Flatt PR, O'Harte FPM (2004c) Lys⁹ for Glu⁹ substitution in glucagon-like peptide-1(7-36)amide confers dipeptidylpeptidase IV resistance with cellular and metabolic actions similar to those of established antagonists glucagon-like peptide-1(9-36) amide and exendin (9-39). *Metabolism* 53:252-259
- Green BD, Gault V A, O'Harte FPM, Flatt, PR (2005) A comparison of the cellular and biological properties of DPP-IVresistant N-glucitol analogues of glucagon-like peptide-1 and glucose-dependent insulinotropic polypeptide. *Diabetes, Obes Metab* 7:595–604
- Goto M, Maki T, Kiyozumi T, Satomi S, Monaco AP (1985) An improved method for isolation of mouse pancreatic islets. *Transplantation* 40:437-438
- Gribble FM, Williams L, Simpson AK, Reimann F (2003) A novel glucose-sensing mechanism contributing to glucagon-like peptide-1 secretion from the GLUTag cell line. *Diabetes* 52:1147-1154
- Henquin JC (2000). Triggering and amplifying pathways of regulation of insulin secretion by glucose. *Diabetes* 49: 1751–1760
- Islam MS, du Loots T (2009) Experimental rodent models of type 2 diabetes: a review. *Methods Find Exp Clin Pharmacol* 31:249–261.
- Kim JH, Lee JO, Jung JH, Lee SK, You GY, Park SH, Kim HS (2010) Gaegurin-6 stimulates insulin secretion through calcium influx in pancreatic beta Rin5mf cells, *Regul Pept* 159:123-128

- Lacy PE, Kostianovsky M (1967) Method for the isolation of intact islets of Langerhans from the rat pancreas. *Diabetes* 16:35–39
- Lewis RJ, Garcia ML (2003) Therapeutic potential of venom peptides. *Nat Rev* 2:790 – 802
- McClenaghan NH, Flatt PR, Ball AJ (2006) Actions of glucagon-like peptide-1 on KATP channel-dependent and -independent effects of glucose, sulphonylureas and nateglinide. *J Endocrinol* 190:889–896
- Mechkarska M, Prajeep M, Coquet L, Leprince J, Jouenne T, Vaudry H, King JD, Conlon JM (2012) The hymenochirins: A family of host-defense peptides from the Congo dwarf clawed frog *Hymenochirus boettgeri* (Pipidae). *Peptides* 35:269–275
- Mechkarska M, Prajeep M, Radosavljevic GD, Jovanovic IP, Al Baloushi A, Sonnevend A, Lukic ML, Conlon JM (2013) An analog of the host-defense peptide hymenochirin-1B with potent broad-spectrum activity against multidrug-resistant bacteria and immunomodulatory properties. *Peptides* 50:153–159
- Meier JJ, Gallwitz B, Nauck MA (2003) Glucagon-like peptide-1 and gastric inhibitory polypeptide: potential applications in type 2 diabetes mellitus. *Biodrugs* 2 93–102
- Nattrass M, Bailey CJ (1999) New agents for type 2 diabetes. *Best Pract Res Clin Endocrinol Metab* 13:309–329
- Ojo OO, Abdel-Wahab YHA, Flatt PR, Conlon JM (2013a) Insulinotropic actions of the frog skin host-defense peptide alyteserin-2a: a structure-activity study, *Chem Biol Drug Des* 82:196–204
- Ojo OO, Conlon JM, Flatt PR, Abdel-Wahab YH (2013b) Frog skin peptides (tigerinin-1R, magainin-AM1, -AM2, CPF-AM1, and PGla-AM1) stimulate secretion of glucagon-like peptide 1 (GLP-1) by GLUTag cells. *Biochem Biophys Res Commun* 431:14–18
- Ojo OO, Srinivasan DK, Owolabi BO, Conlon JM, Flatt PR, Abdel-Wahab YHA (2015a) Magainin-AM2 improves glucose homeostasis and beta cell function in high-fat fed mice. *Biochim Biophys Acta* 1850:80-87
- Ojo OO, Srinivasan DK, Owolabi BO, Flatt PR, Abdel-Wahab YH (2015b) Beneficial effects of tigerinin-1R on glucose homeostasis and beta cell function in mice with diet-induced obesity-diabetes. *Biochimie* 109:18-26
- Peters A (2010) Incretin-based therapies: review of current clinical trial data. *Amer J Med* 123: S28–S37

- Pospisilik JA, Martin J, Doty T, Ehses JA, Pamir N, Lynn FC, Teau S, Demuth H-U, McIntosh CHS, Pederson RA (2003) Dipeptidyl peptidase IV inhibitor treatment stimulates cell survival and islet neogenesis in streptozotocin-induced diabetic rats *Diabetes* 52:741-750
- Reimann F, Williams L, da Silva Xavier G, Rutter GA, Gribble FM (2004) Glutamine potently stimulates glucagon-like peptide-1 secretion from GLUTag cells. *Diabetologia* 47:1592–1601
- Serra I, Scorciapino MA, Manzo G, Casu M, Rinaldi AC, Attoub S, Mechkarska M, Conlon JM (2014) Conformational analysis and cytotoxic activities of the frog skin host-defense peptide, hymenochirin-1Pa. *Peptides* 61:114-121
- Srinivasan D, Mechkarska M, Abdel-Wahab YHA, Flatt PR, Conlon JM (2013) Caerulein precursor fragment (CPF) peptides from the skin secretions of *Xenopus laevis* and *Silurana epittropicalis* are potent insulin-releasing agents. *Biochimie* 95:429-435
- Srinivasan D, Ojo OO, Abdel-Wahab YHA, Flatt PR, Guilhaudis L, Conlon JM (2014) Insulin-releasing and cytotoxic properties of the frog skin peptide, tigerinin-1R: a structure-activity study. *Peptides* 55:23-31
- Tokuda M, Katsuno T, Ochi F, Miyakoshi K, Kusunoki Y, Murai K, Miuchi M, Hamaguchi T, Miyagawa J, Namba M (2014) Effects of exenatide on metabolic parameters/ control in obese Japanese patients with type 2 diabetes, *Endocr J* 61:365–372
- Tolhurst G, Zheng Y, Gribble FM (2011) Glutamine triggers and potentiates glucagon-like peptide-1 secretion by raising cytosolic Ca²⁺ and cAMP. *Endocrinology* 152:405-413
- Wang CY, Liao JK (2012) A mouse model of diet-induced obesity and insulin resistance. *Methods Mol Biol* 821; 421 - 433
- Zhang HJ, Zhou F, Ji BP, Li B, Luo YC, Yu HQ, Zhang GZ (2009) Effects of fructose and/or fat in the diet on developing the type 2 diabetic-like syndrome in CD-1 mice. *Horm Metab Res* 41:40–45.

LEGEND TO FIGURES

Figure 1: A comparison of the effects of (A) [P5K]-hymenochrin-1B, (B) [D9k]hymenochrin-1B, and (C) [E6K]-hymenochrin-1B with hymenochrin-1B on insulin release from BRIN-BD11 cells. Values are mean \pm SEM for n=8. *P<0.05, **P<0.01, ***P<0.001 compared to 5.6mM glucose alone. Δ P<0.05, $\Delta\Delta$ P<0.01, $\Delta\Delta\Delta$ P<0.001 compared to hymenochirin-1B

Figure 2: A comparison of the effects of hymenochrin-1B and [P5K]hymenochrin-1B on (A) insulin and (B) LDH release from isolated mouse islets. Values are mean \pm SEM (n = 4). *P<0.05, **P<0.01, ***P<0.001 compared to 16.7 mM glucose. ^+P <0.05, ^{++}P <0.01, ^{+++}P <0.001 compared to hymenochirin-1B. Δ P<0.05, $\Delta\Delta$ P<0.01, $\Delta\Delta\Delta$ P<0.001 compared to GLP-1 (10^{-6} M).

Figure 3: Effects of hymenochirin-1B and [P5K]hymenochrin-1B on membrane potential in BRIN-BD11 cells expressed as (A) relative fluorescence units, RFU and (B) area under the curve. Values are mean \pm SEM (n = 6). ***P < 0.001 compared with 5.6 mM glucose alone.

Figure 4: Effects of hymenochirin-1B and [P5K]hymenochrin-1B on intracellular calcium in BRIN-BD11 cells expressed as (A) relative fluorescence units, RFU and (B) area under the curve. Values are mean \pm SEM (n = 6). ***P < 0.001 compared with 5.6 mM glucose alone.

Figure 5: Effects of [P5K]hym-1B on cAMP production and insulin release in BRIN-BD 11 cells. Cells were incubated for 20 min at 37°C with control, [P5k]hym-1B or GLP-1 in KRB buffer supplemented with 5.6mM glucose + 200 μ M 3-isobutyl-1-methylxanthine (IBMX). Values are mean \pm SEM for n=6. ***P<0.001 compared to 5.6mM glucose alone. $\Delta\Delta$ P<0.01, $\Delta\Delta\Delta$ P<0.001 compared to 5.6mM glucose + IBMX.

Figure 6: Effects of [P5K]hym-1B on insulin release from BRIN-BD11 cells following down regulation of the PKA and PKC pathways by overnight culture 25 μ M forskolin or 10nM PMA respectively. Values are mean \pm SEM for n=8. ***P<0.001 compared to 5.6mM glucose,

$\Delta\Delta\Delta P < 0.001$ compared to respective incubation with normal culture, $\phi\phi P < 0.01$, $\phi\phi\phi P < 0.001$ compared to respective incubation with forskolin culture, $^{++}P < 0.01$, $^{+++}P < 0.001$, compared to respective incubation with PMA culture.

Figure 7: Effects of [P5K]-Hymenochirin-1B on GLP- 1 release from GLUTag cells. Glutamine (10mM) was used as positive control. Values are mean \pm SEM for n=4. *P<0.05, ***P<0.001 compared to 2mM glucose alone.

Figure 8: Acute effects of administration of [P5K]hym-1B (75 nmol/kg body weight, A-D) and [D9k] hym-1B (75 nmol/kg body weight, E-H) on blood glucose and plasma insulin concentrations in high fat-fed mice after intraperitoneal injection of glucose. Values are mean \pm SEM (n =8). **P<0.01 ***P<0.001 compared to glucose alone.

LEGEND TO TABLES

Table 1: Effects of hymenochirin-1B and its analogues on insulin release from BRIN-BD 11 cells. Basal release represents the rate of insulin release at 5.6 mM glucose alone and is set at 100%. Threshold concentration refers to the minimum concentration of the peptide producing a significant ($P < 0.05$) increase in the rate of insulin release. Values are mean \pm SEM ($n = 8$). * $P < 0.05$, *** $P < 0.001$ compared to hymenochirin-1B at the same concentration.

Table 2: Effects of hymenochirin-1B and analogues on insulin and LDH release from isolated mouse islets. Threshold concentration refers to the minimum concentration of the peptide producing a significant ($P < 0.05$) increase in the rate of insulin release. Values are mean \pm SEM ($n = 4$). *** $P < 0.001$ compared to 16.7mM glucose. $\Delta\Delta P < 0.01$ compared to GLP-1 ($10^{-6}M$), ++ $P < 0.01$ compared to hymenochirin-1B.

Table 3: Effects of hymenochirin-1B and [P5K]hymenochirin-1B on insulin release from BRIN-BD11 cells in the presence of established modulators of insulin secretion. Values are mean \pm SEM ($n = 6$). * $P < 0.05$, *** $P < 0.001$ compared to appropriate glucose control.

Table 4: Effects of hymenochirin-1B and [P5K]hymenochirin-1B on insulin release from BRIN-BD11 cells in the absence of extracellular calcium. Values are mean \pm SEM ($n = 6$). *** $P < 0.001$ compared to appropriate glucose control.

Fig. 1

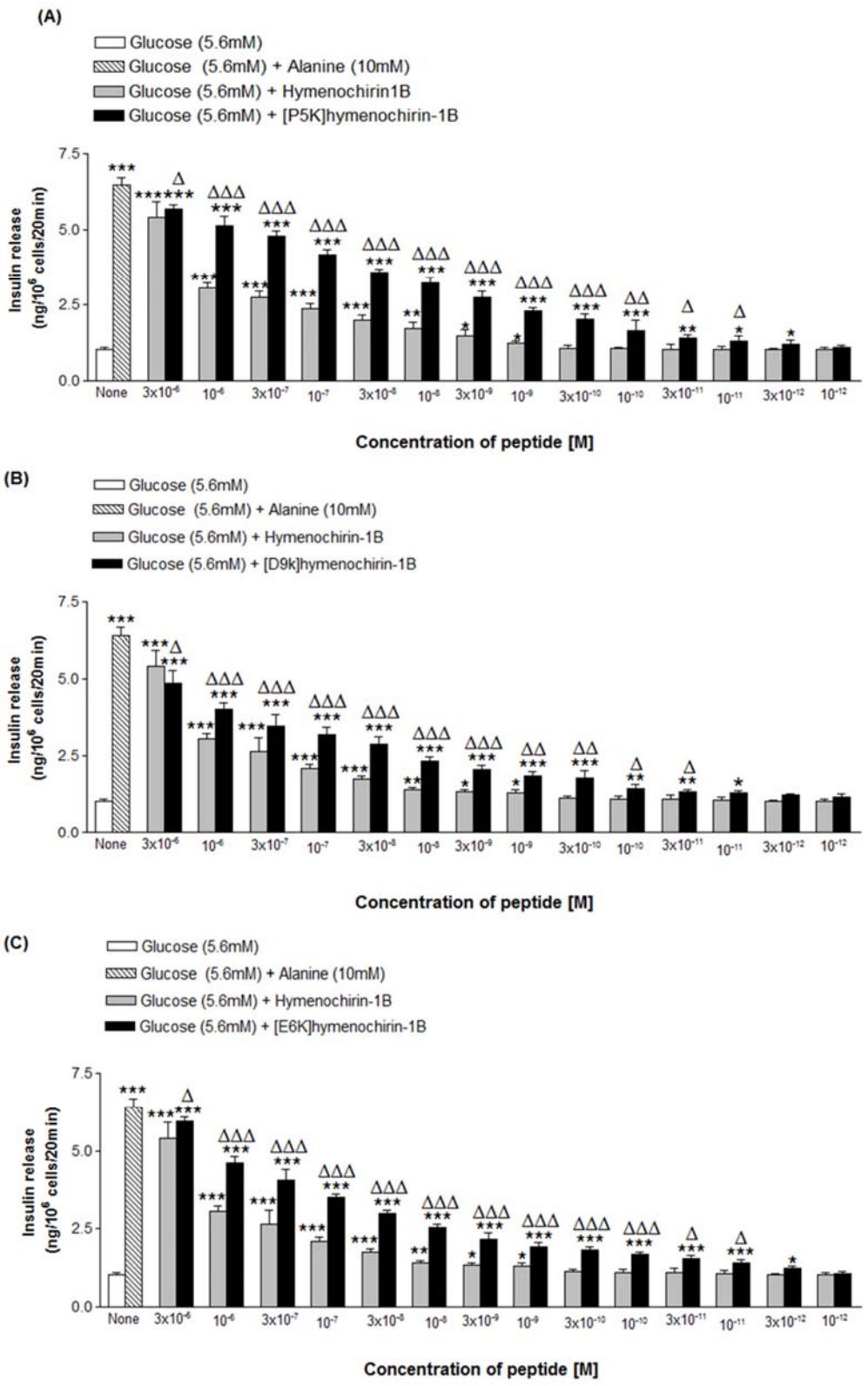


Fig. 2

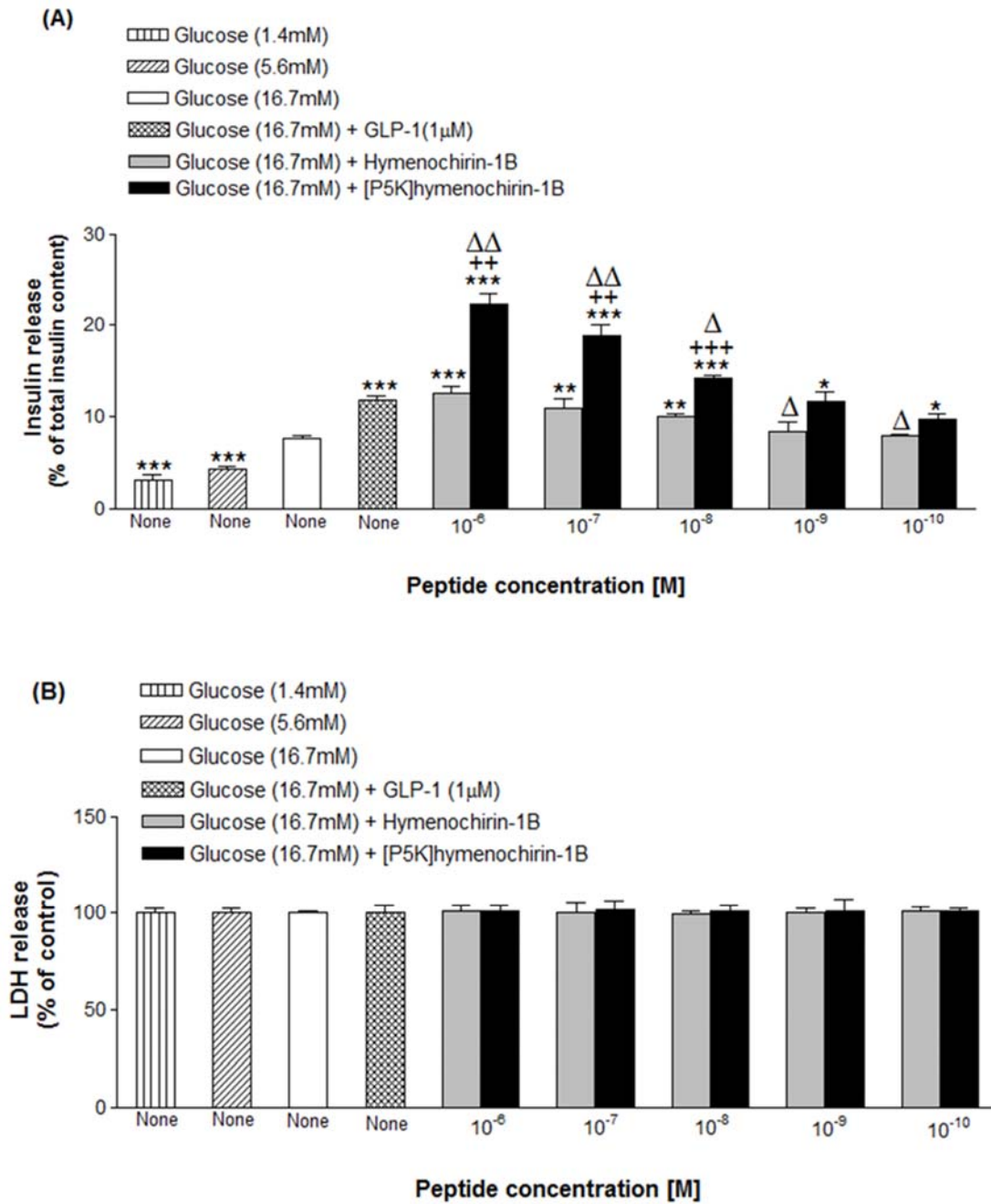


Fig. 3

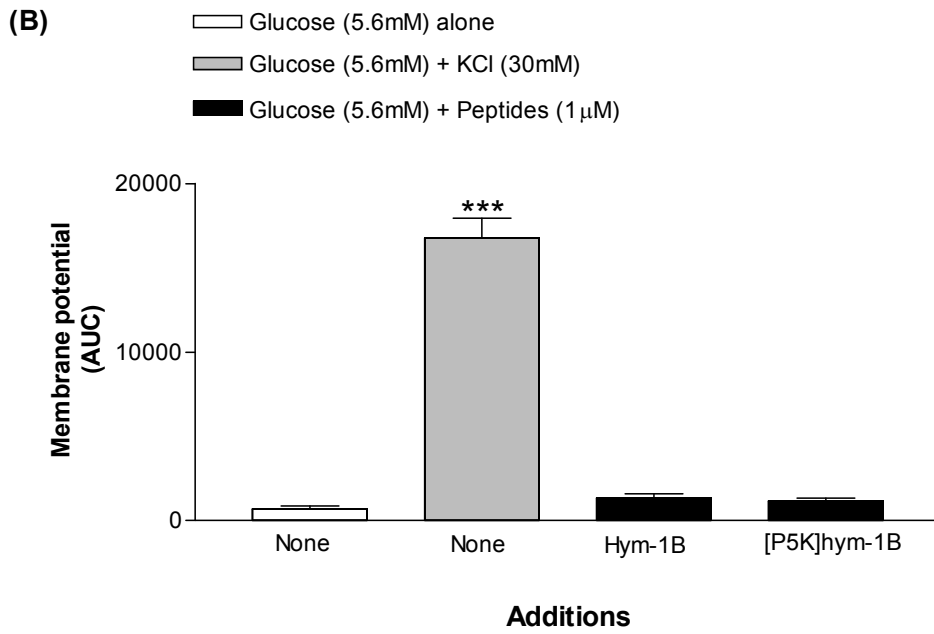
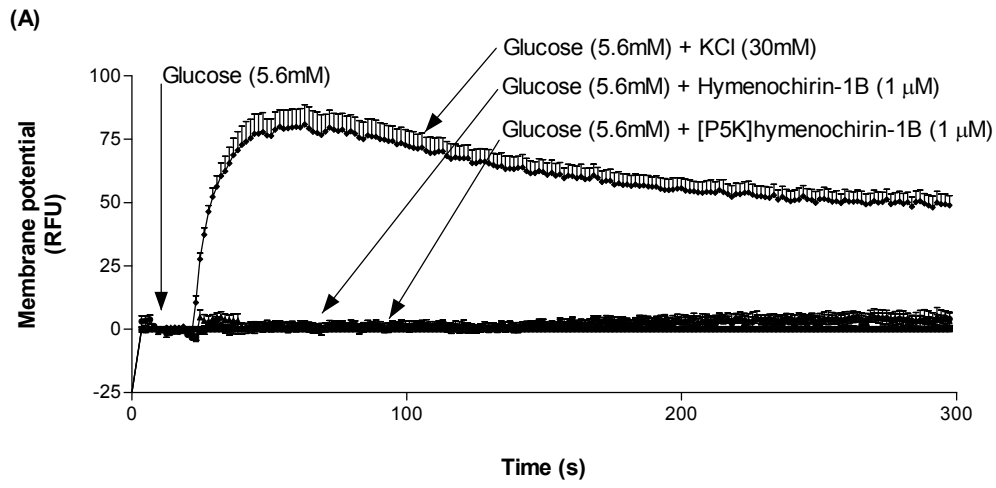


Fig. 4

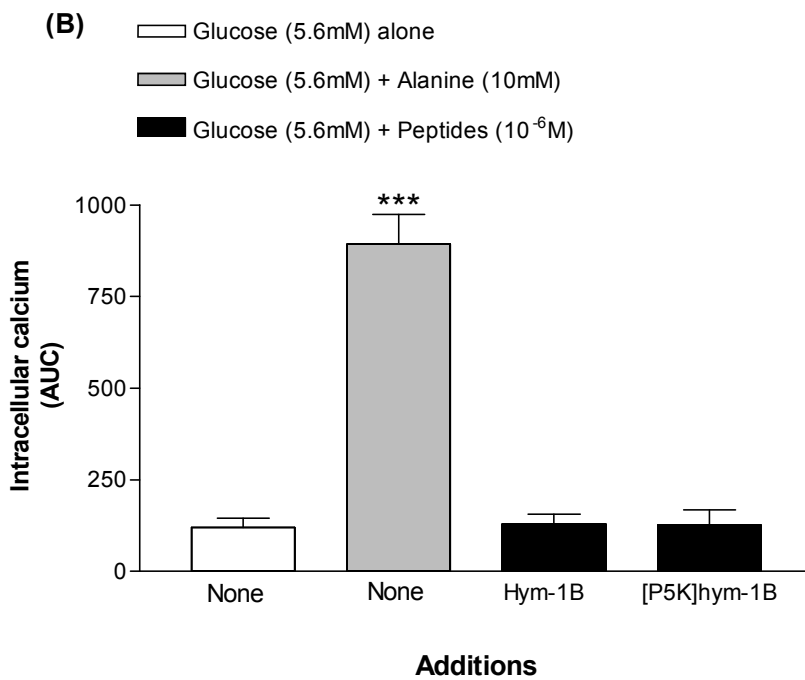
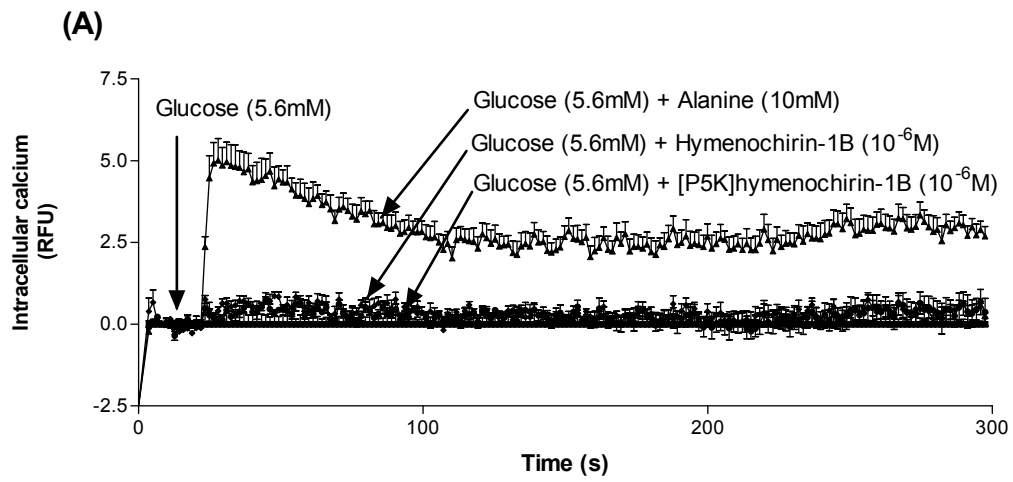
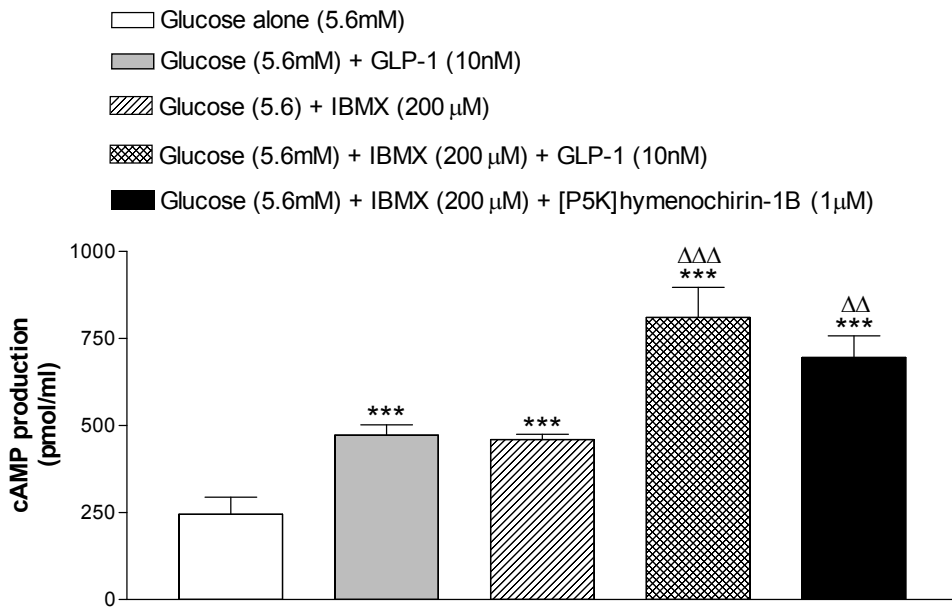


Fig. 5

(A)



(B)

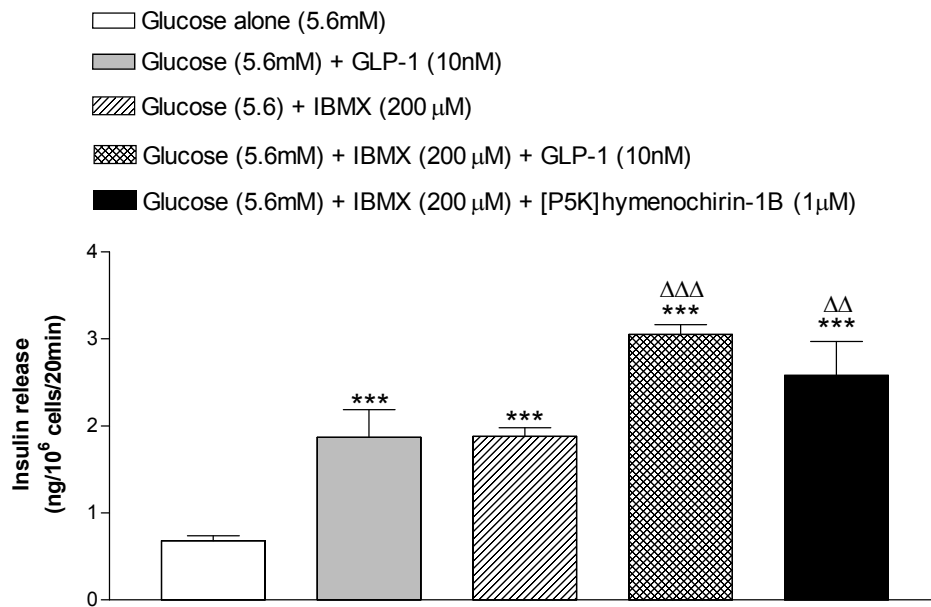


Fig. 6

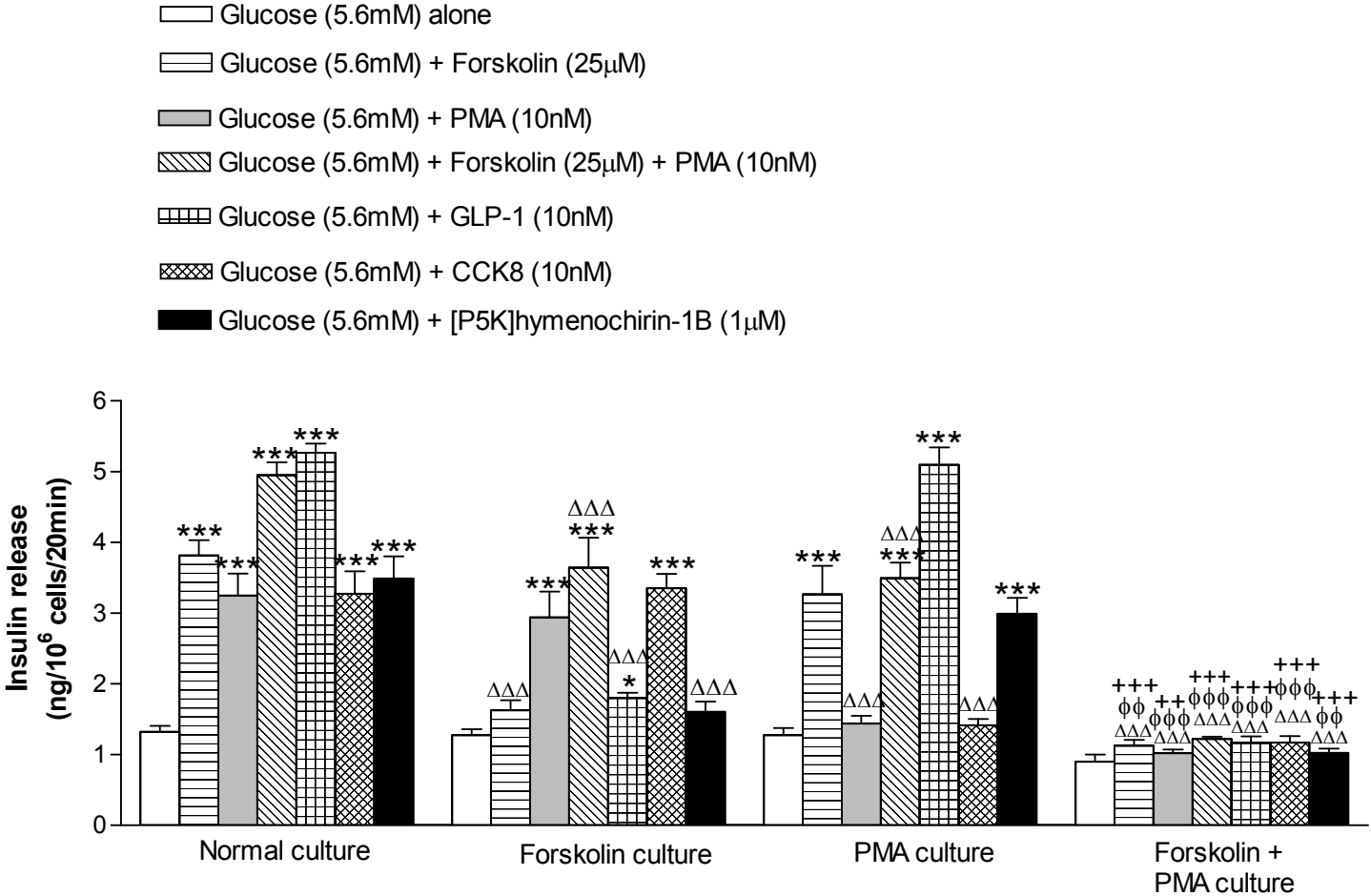


Fig.7

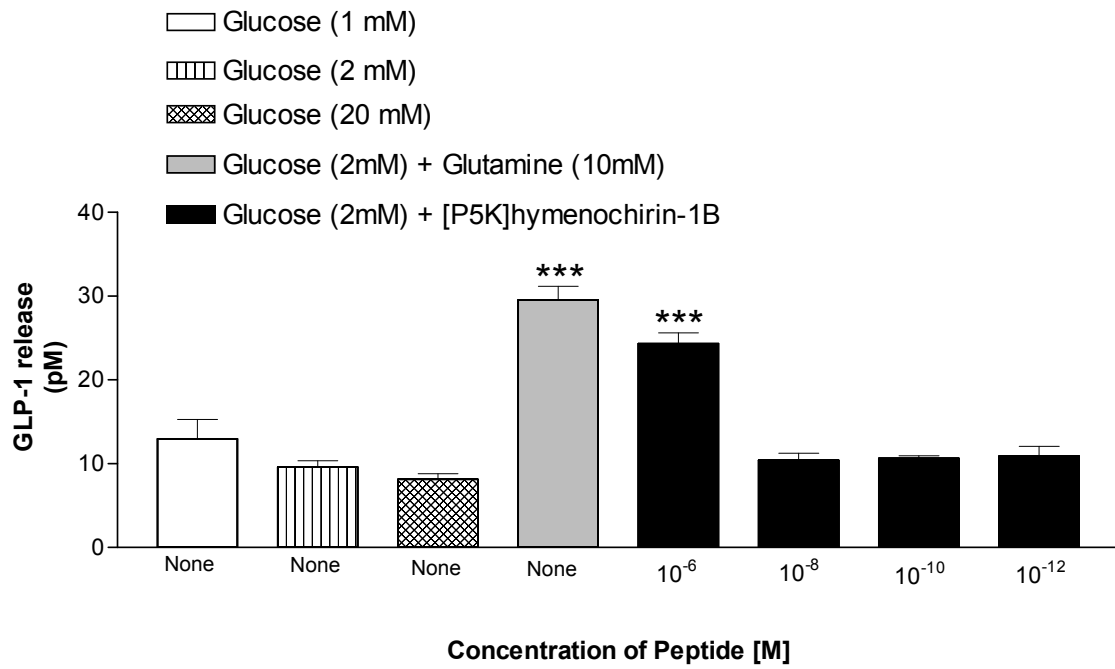


Fig. 8

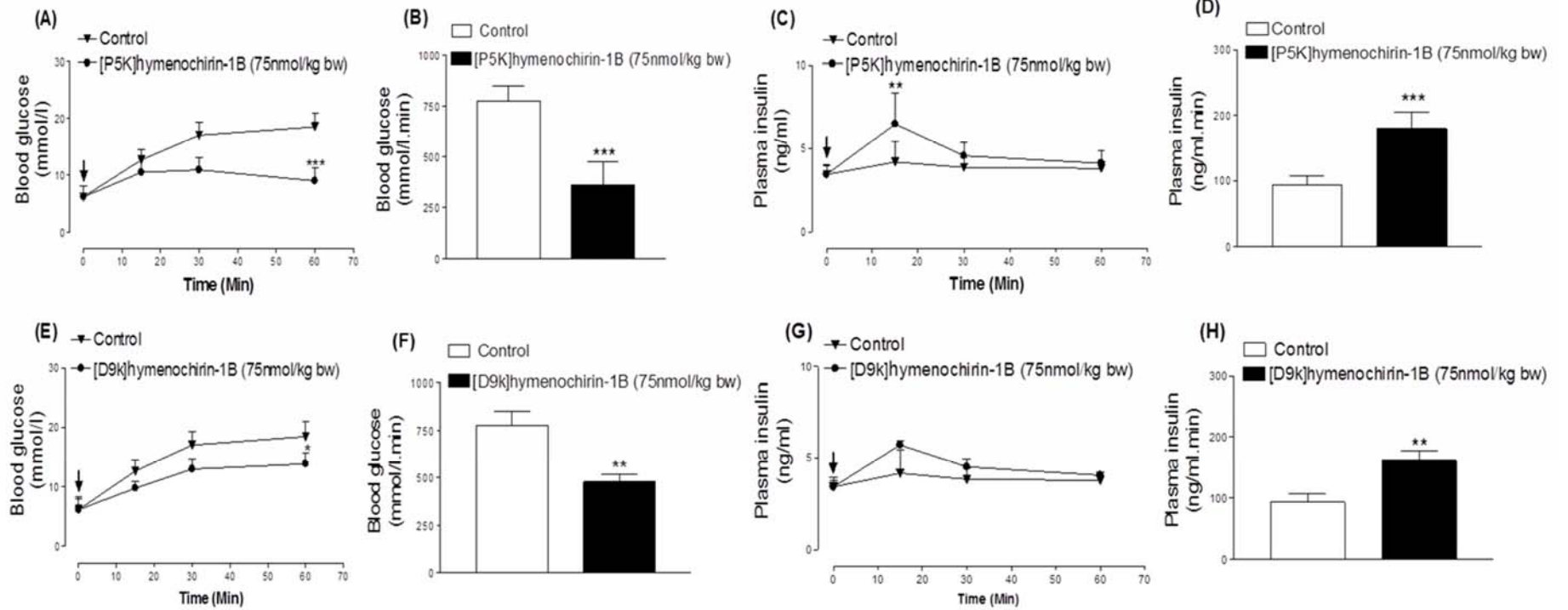


Table 1

Peptide	Threshold concentration (nM)	Maximum non-toxic stimulatory concentration (μM)	% of Basal insulin release at maximum non-toxic concentration
Hymenochirin-1B	1	1	304.4 ± 19.35
[P5K]hymenochirin-1B	0.003	3	568.5 ± 11.91***
[E6K]hymenochirin-1B	0.003	1	459.7 ± 21.95***
[D9K]hymenochirin-1B	0.003	1	404.8 ± 26.88*
[P5K,E6K]hymenochirin-1B	0.003	0.3	333.2 ± 25.70
[P5K,D9K]hymenochirin-1B	0.1	0.3	301.0 ± 12.34
[E6K, D9K]hymenochirin-1B	0.01	0.1	362.5 ± 14.24*
[E6k]hymenochirin-1B	0.3	1	312.0 ± 38.88
[D9k]hymenochirin-1B	0.01	3	486.4 ± 41.29**
[E6k,D9k]hymenochirin-1B	0.003	1	453.4 ± 29.76**

Table 2:

Peptide	Threshold concentration (nM)	Insulin release (% of total insulin content) at 1 μ M	LDH release (% of release at 16.7mM glucose)
16.7mM glucose	-	7.64 \pm 0.32	100.00 \pm 8.58
16.7mM glucose + GLP-1 (10 ⁻⁶ M)	-	11.76 \pm 0.54 ^{***}	100.55 \pm 5.47
Hymenochirin-1B	10	13.36 \pm 0.07 ^{***}	100.84 \pm 6.23
[P5K]hymenochirin-1B	0.1	22.30 \pm 1.27 ^{***, $\Delta\Delta$, ++}	100.78 \pm 7.12
[D9k] hymenochirin-1B	10	17.76 \pm 1.46 ^{***, $\Delta\Delta$, ++}	100.98 \pm 4.32

Table 3:

Groups	Insulin Release (ng/10⁶ cells/20min)
5.6mM glucose	1.15±0.005
5.6mM glucose+ Hym-1B (10 ⁻⁶ M)	2.65±0.27 ***
5.6mM glucose+ [P5K]hym-1B (10 ⁻⁶ M)	5.98±0.81 ***
16.7mM glucose	2.66±0.11
16.7mM glucose+ Hym-1B (10 ⁻⁶ M)	4.25±0.21 ***
16.7mM glucose+[P5K]hym-1B (10 ⁻⁶ M)	7.10±0.59 ***
5.6mM glucose + 300µM Diazoxide	0.31±0.02
5.6mM glucose + 300µM Diazoxide+ Hym-1B (10 ⁻⁶ M)	0.80±0.04 ***
5.6mM glucose + 300µM Diazoxide+ [P5K]hym-1B (10 ⁻⁶ M)	1.04±0.13 ***
5.6mM glucose + 50µM Verapamil	0.34±0.07
5.6mM glucose + 50µM Verapamil+ Hym-1B (10 ⁻⁶ M)	1.40±0.09 *
5.6mM glucose + 50µM Verapamil+ [P5K]hym-1B (10 ⁻⁶ M)	3.57±0.44 *
16.7mM glucose + 30mM KCl	8.93±0.54
16.7mM glucose + 30mM KCl+ Hym-1B (10 ⁻⁶ M)	12.11±0.86 *
16.7mM glucose + 30mM KCl+ [P5K]hym-1B (10 ⁻⁶ M)	17.19±0.57*

Table 4:

Groups	Insulin Release (ng/10⁶ cells/20min)
5.6mM glucose	1.094±0.09
5.6mM glucose+ Hym-1B (10 ⁻⁶ M)	2.07±0.13***
5.6mM glucose+ [P5K]hym-1B (10 ⁻⁶ M)	3.06±0.17***
5.6mM glucose (calcium free)	0.51±0.06
5.6mM glucose (calcium free) + Hym-1B (10 ⁻⁶ M)	1.98±0.15***
5.6mM glucose (calcium free) + [P5K]hym-1B (10 ⁻⁶ M)	2.93±0.30***