

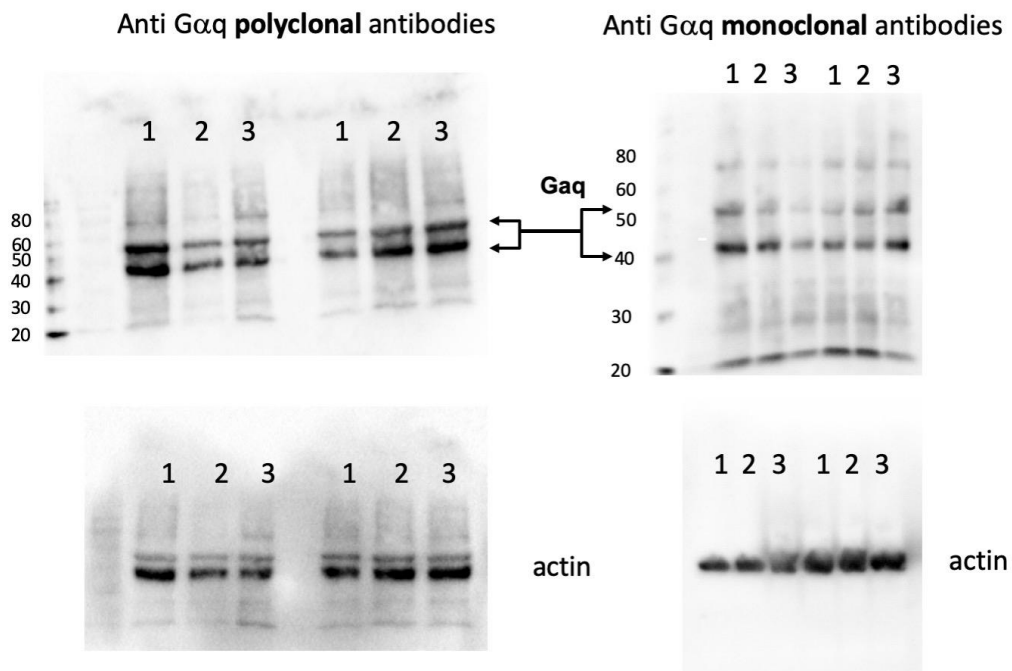
Supplemental Material

Supplementary Table 1

Gene	Day 1 vs Control	Day 3 vs Control	Primers
G _γ 1	NAC	**	F: CGTTGCCGAGGAGTCAGCGA R: TCCAGGTGGCGTTGATACTGGT
G _γ 30A	NAC	NAC	F: TCTGGTGCCGGTAGAGATGCAG R: TGAATGCTCCGCTTGCCCCC
Gβ5	NAC	NAC	F: TCTGGGACATGCGCTCTGGTCA R: TGCTGTCATCCGATCCAGTGGC
Gβ13F	NAC	NAC	F: CGTGGGTGATGACCTGTGCG R: CACGGGACACCCGGACGTTG
Gβ76C	NAC	NAC	F: ACCATCCCAGTGGCTTCGGGT R: GCCAGTGTTCTTCTGGGGCGG
Gai	NAC	**	F: CGCGCAATGGGACGCCTGAA R: GCAGCAGGATGCCCTCGTGC
Gaq	NAC	***	F: CAGCAGCACGCGAAAGCGT R: GTCCCGGCGCAACTGCTTCT
Gao	NAC	**	F: AACGCCTCTGGCAGGACG CC R: TTGGCGCCTAACCGATCCAAA
Gaf	NAC	NAC	F: CATGGGTGGTGGCGAACAGCAG R: CTGCACGAGATCAGGAACAATACGG
Gas	NAC	*	F: AGCAGGATATTCTTCGGTGCCGT R: TTCCTACGCTCGTCCCGCTG

Supplementary Table 1. Effect of ethanol on G protein subunit expression. The expression of the indicated *Drosophila* G proteins was measured by qRT-PCR using the described specific primers in naïve *Drosophila* and *Drosophila* exposed to ethanol for 30 min for three consecutive days with 24 h interval. Experiments were repeated 2-3 times and qualitative comparisons adjusted to β actin expression are reported: NAC= no apparent change; * small changes (< 20%) in some repeats; ** changes (20-25%) in all repeats, larger changes (>25%) in all repeats. This data led to the choice of continuing work with Gaq, however some of the other subunits should be further investigated, especially G_γ1, Gai and Gao. (β-Actin primers were: F: GCGTCGGTCAATTCAATCTT and R:AAGCTGCAACCTCTTCGTCA)

Supplementary Figure 1



Supplementary Figure 2

