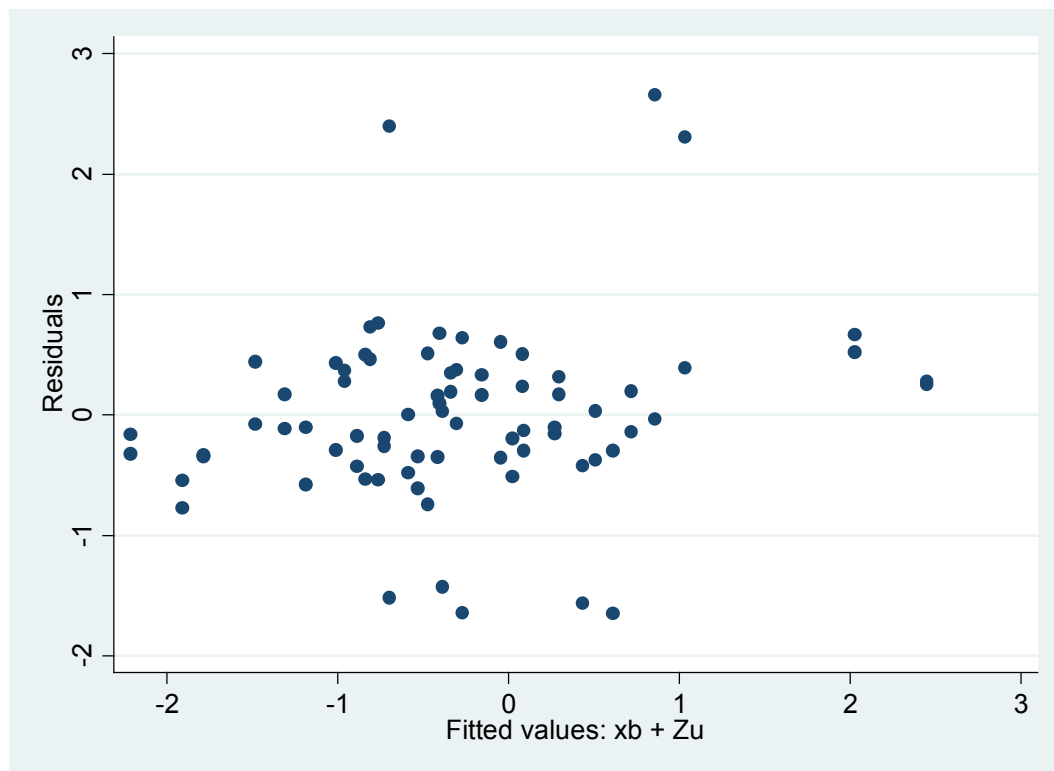


## Supplementary material I:

### Results

*Pain threshold analysis:* Although residuals in the mixed model used to analyze the HPT were bell shaped, they were not normal distributed ( $W = 0.884, P < 0.0001$ ). A plot of the fitted values against the residuals identified 8 data points that were clear outliers. We removed these data points and ran our model. Similar as the model reported in the results section, this model shows a significant main effect of distance ( $z = -3.03, P = 0.002$ ) and has normal distributed residuals ( $W = 0.995, P = 0.997$ ).



**Figure S1.** Plot of fitted values against residuals.